

Color: Moss Green
Installer: Dowling Brothers Roofing

NRM-4000 PANELS • Exposed Fastener Panel

NRM-4000 panels are a cost-effective yet architecturally attractive metal panel. The 4000 panel can be specified in a wide variety of building applications including roofs, walls and soffits. It can be factory roll-formed in a maximum length of 44' 0" and a minimum length of 4' 0".

NRM-4500 features a $\frac{5}{8}$ " leg height and an anti-siphon groove to assist in weather resistance. The panel is produced in gauges ranging from 28 to 24, allowing its use in many post frame and industrial applications.

FASTENERS

For roofing applications, use wood-type screws fastened on 24" centers. Other screw types are available applications over structural steel and steel decking.

TRIM

All flashing and trim shall be fabricated by Nu-Ray Metals or a qualified fabricator. Flashings for this panel shall be 28, 26 or 24 gauge steel.

INSTALLATION

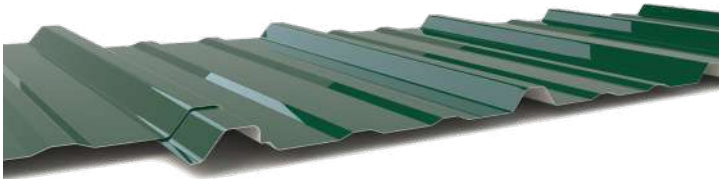
For roofing applications, NRM-4000 panels shall be installed over solid decking or open purlins ($\frac{5}{8}$ " plywood, nailboard insulation or equivalent, with an underlayment of 30# roofing felt applied horizontally from eave to ridge.) Panels shall be fastened on 24" centers (roof) or 48" centers (wall). Minimum roof pitch is 3:12.

HANDLING

Vinyl masking is provided on all steel sheet to help protect materials where extra handling is expected.

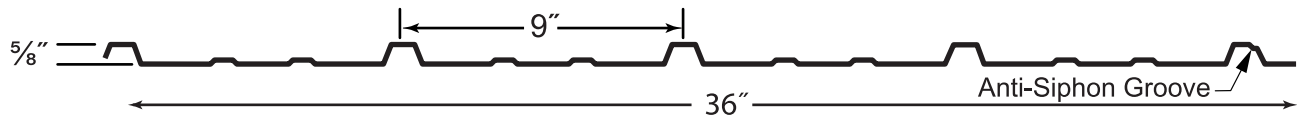
WARRANTY

A 40-year non-prorated finish warranty can be supplied covering finish performance.



Nu-Ray Metal Products, Inc. 1234 37th Street NW Auburn, WA 98001
Tel. (800) 700-7228 Fax (253) 833-7268 Web NuRayMetals.com

NRM-4000 PANELS • Exposed Fastener Panel



NRM-4000 FEATURES

- Great panel for architectural, commercial and industrial roof, wall and soffit applications
- Standard anti-siphon groove
- Excellent load and span capacities
- Apply over open framing or solid substrates
- Export crating available
- Minimum 3:12 roof pitch

PANEL DEPTH : 5/8"

PANEL COVER WIDTH : 36"

PANEL LENGTHS: 5' 0" to 44' 0" standard

METAL OPTIONS

- 22 (special order), 24, 26 and 28 gauge G90 or AZ50 steel
- .032 and .040 aluminum (special order)
- 16 oz. or 20 oz. natural copper (special order)

SURFACE OPTIONS

- Standard as shown in cross-section above

FINISHES

- D2 Kynar 500® ULTRA-Cool™
- D2 Kynar 500® with Ocean Guard ULTRA-Cool™
- Zincalume Plus*
- Standard Kynar 500® ULTRA-Cool™
- Standard Silicone Modified Polyester (SMP)

Kynar® and Kynar 500® are registered trademarks of Arkema Inc. used under sublicense by Nu-Ray Metal Products, Inc.



(800) 700-7228

www.NuRayMetals.com

Questions? Contact our Technical Department at
info@nuraymetals.com